



Erin Ferguson
Phone: 403-992-3746
Mobile:
Fax:
Email: erin@erinferguson.ca
Office: 403-992-3746

Century 21 Bamber Realty Ltd
1612 17 Ave SW
Calgary, AB
T2T 0E3

#203 836 ROYAL AV SW, Mission, Calgary, Alberta, T2T 0L3, Canada

MLS®# C4305993



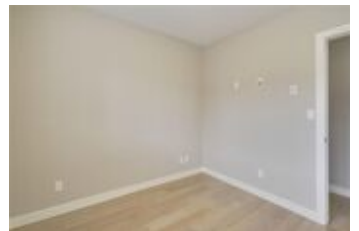
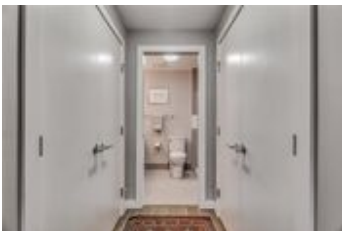
Image not found or type unknown

Property Value	\$349,900
Type	Apartment
Style	Low-Rise(1-4)
Parking	Indoor, Titled, Heated Garage, Underground
Year Built	2013
Living Area	890 sq.ft.
Bedrooms	2
Bathrooms	2 full

Description

13k Price Drop!! This unit is priced to sell!!! Fantastic Inner City Location at a UNO on Royal Avenue! Just short of 900 sq ft this spacious and modern 2 bed/2 bath corner unit is perfect for all of your inner city needs. The Kitchen is complete with quartz countertops, top of the line appliances, tons of cabinetry and a wine/beverage fridge. The Master bedroom with includes an ensuite bath which features and oversized shower and his/hers sinks. The unit also includes custom California Closets in both bedrooms. This unit also overlooks the beautiful courtyard and has a large patio complete with gas BBQ line. This unit comes with one titled underground parking, separate storage locker and bike racks. Awesome location close to all the trendy shops and restaurants on 17th Avenue as well as its steps to new grocery store Urban Fare and Canadian Tire on 8th & 17th Ave. This building is also pet friendly and just a few blocks away from an off leash park.





Disclaimer

The information posted on this website is intended only for the information of its readers. While all attempts are made to insure the correctness and suitability of information under our control and to correct any errors brought to our attention, no representation or guarantee can be made as to the correctness or suitability of that information or any other linked information presented, referenced, or implied. Any decisions or actions taken based on any information in this site, or any sites linked to it, are the sole responsibility of the user.