



Erin Ferguson
Phone: 403-992-3746
Mobile:
Fax:
Email: erin@erinferguson.ca
Office: 403-992-3746

Century 21 Bamber Realty Ltd
1612 17 Ave SW
Calgary, AB
T2T 0E3

1105, 733 14 Avenue SW, Beltline, Calgary, Alberta, T2R 0N3, Canada

MLS®# A2028373



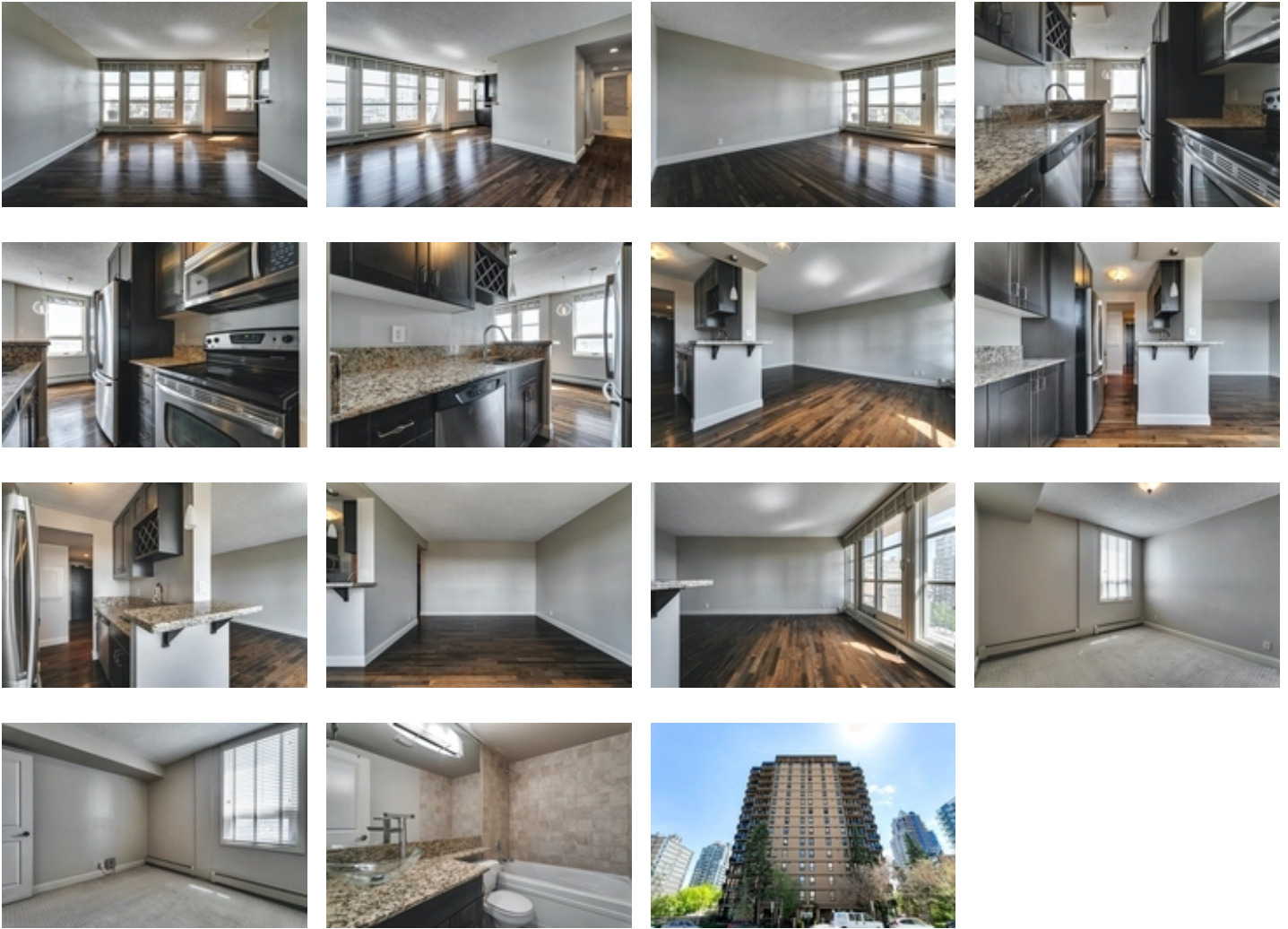
Image not found or type unknown

Property Value	\$219,900
Type	Apartment
Style	Apartment
Parking	Assigned, Stall
Year Built	1967
Living Area	618.76 sq.ft.
Bedroom	1
Bathroom	1 full

Description

Welcome to Centro 733 in the heart of Calgary's Beltline district, only steps from the downtown core, trendy restaurants & shops on 17th Avenue. This stylish one bedroom, one bath unit, sitting high on the 11th floor has everything you need for your inner city lifestyle. This unit features hardwood floors with access to a sunny south facing balcony with 11th floor views overlooking 17th Ave and Mount Royal. The kitchen is galley style with plenty of counter space featuring granite counter tops, stainless steel appliances, and ample cupboards. Down the hall you will find a four piece bath, laundry as well as a spacious bedroom. The building amenities include an owner lounge (party room), exercise gym, storage room, and a common laundry area. A designated parking stall and storage locker is included with the unit. This unit has been well maintained with a well run condo board making it a great place to own instead of paying rent. Note: Condo fees cover all utilities including electricity.





Disclaimer

The information posted on this website is intended only for the information of its readers. While all attempts are made to insure the correctness and suitability of information under our control and to correct any errors brought to our attention, no representation or guarantee can be made as to the correctness or suitability of that information or any other linked information presented, referenced, or implied. Any decisions or actions taken based on any information in this site, or any sites linked to it, are the sole responsibility of the user.