

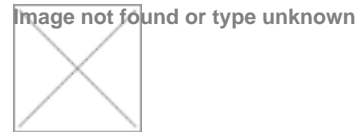


**Erin Ferguson**  
Phone: 403-992-3746  
Mobile:  
Fax:  
Email: erin@erinferguson.ca  
Office: 403-992-3746

**Century 21 Bamber Realty Ltd**  
1612 17 Ave SW  
Calgary, AB  
T2T 0E3

206 1111 13 Ave SW, The Montage, Beltline, Calgary, AB, T2R 0L7, Canada

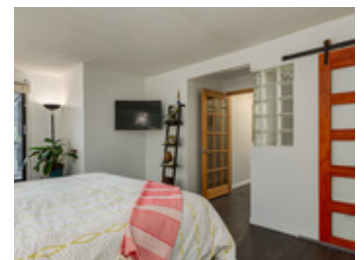
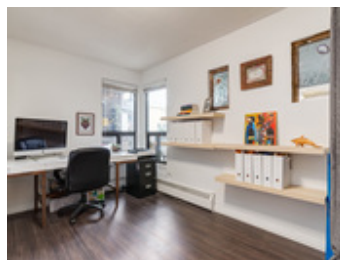
MLS®# C4102344



<b>Property Value</b>	\$284,900
<b>Type</b>	Apartment
<b>Style</b>	Single Level Unit
<b>Parking</b>	Single Indoor, Heated, Underground
<b>Year Built</b>	1981
<b>Taxes</b>	1991
<b>Living Area</b>	1,135 sq.ft.
<b>Bedrooms</b>	2
<b>Bathroom</b>	1 full
<b>Maintenance Fee</b>	735

## Description

Welcome to the Montage. If you are looking for a pet friendly, boutique-style building this condo is for you. This 1135 sqft 2 bed/1 bath unit is one of the largest units in the building and boasts tons of character, from an extremely spacious kitchen to wood burning fireplace to a private patio oasis overlooking the courtyard. The recently renovated kitchen has everything you need for entertaining from stainless steel appliances, a wine fridge and plenty of room to host your next "kitchen party". This condo also features a large master bedroom, new laminate throughout, trendy barn-style doors a spacious second bedroom which could also act as an office/den. The Montage is located on one of the most pedestrian friendly, tree-lined streets, across the street from a playground, an easy walk to downtown/17th Ave. Healthy Reserve fund, new elevator and well managed. Windows are being replaced 2017(paid in full)



## Disclaimer

The information posted on this website is intended only for the information of its readers. While all attempts are made to insure the correctness and suitability of information under our control and to correct any errors brought to our attention, no representation or guarantee can be made as to the correctness or suitability of that information or any other linked information presented, referenced, or implied. Any decisions or actions taken based on any information in this site, or any sites linked to it, are the sole responsibility of the user.